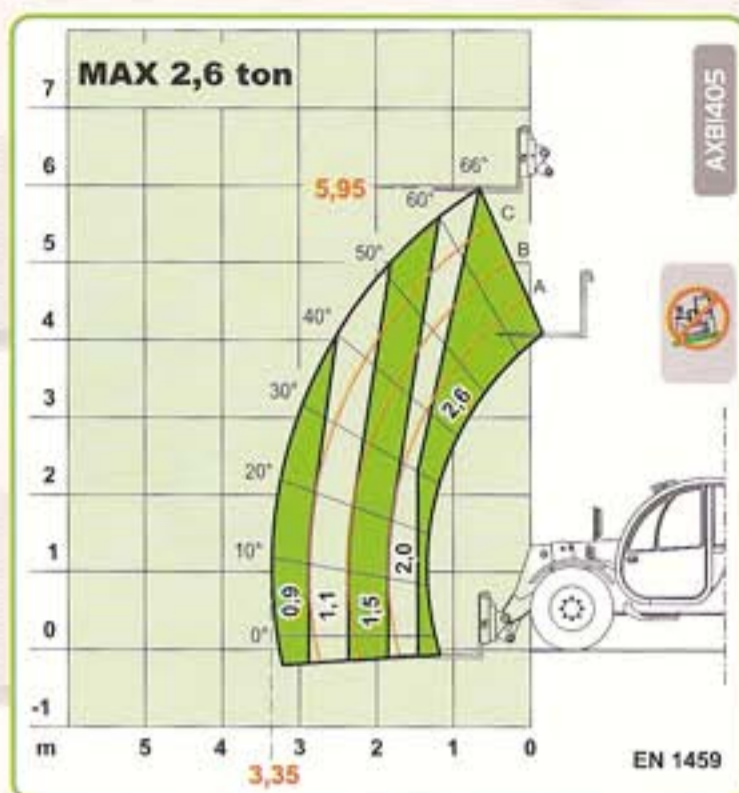
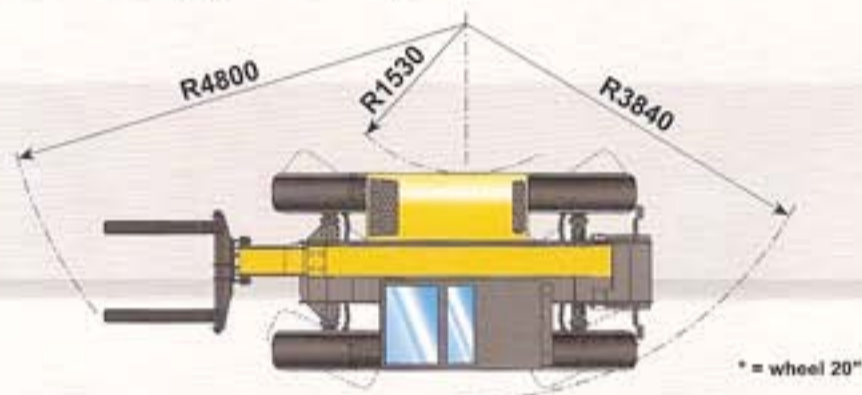
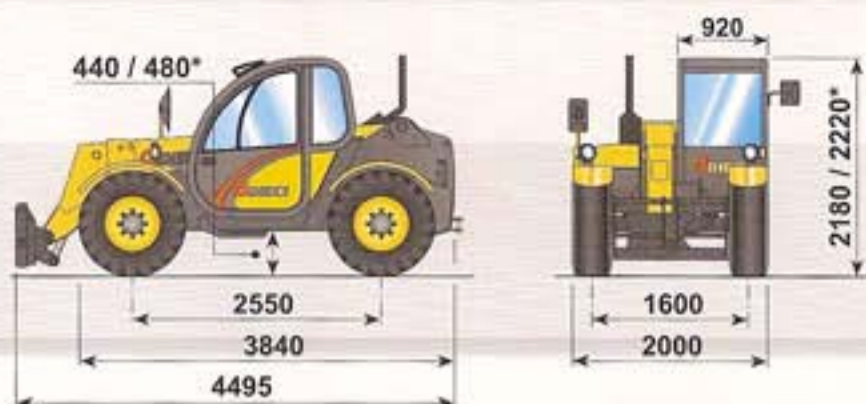


macchine edili ed agricole  
**d DIECI**

**Agri Farmer 26.6**



# Agri Farmer 26.6



## PERFORMANCES

Maximum capacity:	2.600 kg
Capacity at maximum height on tyres:	2.600 kg
Capacity at maximum boom extension on tyres:	900 kg
Maximum lifting height on tyres:	5,95 m
Maximum horizontal boom extension:	3,35 m
Boom extension at maximum height:	0,66 m
Fork tilting angle:	134°
Tearing force:	5.700 daN
Towing force:	7.300 daN
Maximum allowable slope:	40 %
Total empty weight:	5.800 kg
Max speed:	35 km/h

## TRANSMISSION

Transmission: hydrostatic with variable delivery pump  
Hydraulic engine: with automatic adjustment  
Reversing gear: electro - hydraulic  
Inching pedal for controlled forward movement.  
Servocontrolled 2 speed gearbox.

## HYDRAULIC SYSTEM

Gear pump with capacity at max speed:	88 lt/1'
Max working pressure:	230 bar
Control valve with joystick:	3 in 1

## DIFFERENTIAL AXLES

Steering axles: 2, with planetary reduction gears  
Type of steering: 4 wheels/transversal/2 wheels  
Front axle: rigid  
Rear axle: oscillating  
Service brake: oil bath on the front axle  
Negative parking brake.

## OPTIONAL AND ACCESSORIES

Optional and Accessories: see the relevant catalogue

## ENGINE

IVECO NEF F4GE0454A - TC - 74 kW ENGINE  
Maximum power: 74 kW (102 hp) at 2300 rpm  
Operating principle: four-stroke, diesel engine  
Cylinder number and layout: 4, vertical in line  
Displacement: 4485 cm<sup>3</sup> - Turbo compressor  
Cooling system: liquid

## REFUELLING (litre)

Hydraulic tank:	130
Fuel tank:	60

## STANDARD DEVICES

Anti-tipping device with block for hazardous movements.  
Hydraulic socket for possible accessories on boom head.  
Closed soundproof ROPS - FOPS approved driver's cab, with heating.  
Self-locking differential on front axle (limited slip 45%).

## TYRES

Tyres:	12.5x18*
Alternative:	16/70x20*

## TOWING CAPACITY (on request)

Unbraked trailer:	3 ton
Mechanical braking:	5 ton
Hydraulic/pneumatic brake:	17 ton

20" Tyres included

The information contained in this publication is merely indicative; the models described may be modified, without notice, by the manufacturer, drawings and photographs may refer to optional or particular equipment for other countries. For any further information, please contact DIECI premises at the address given below.