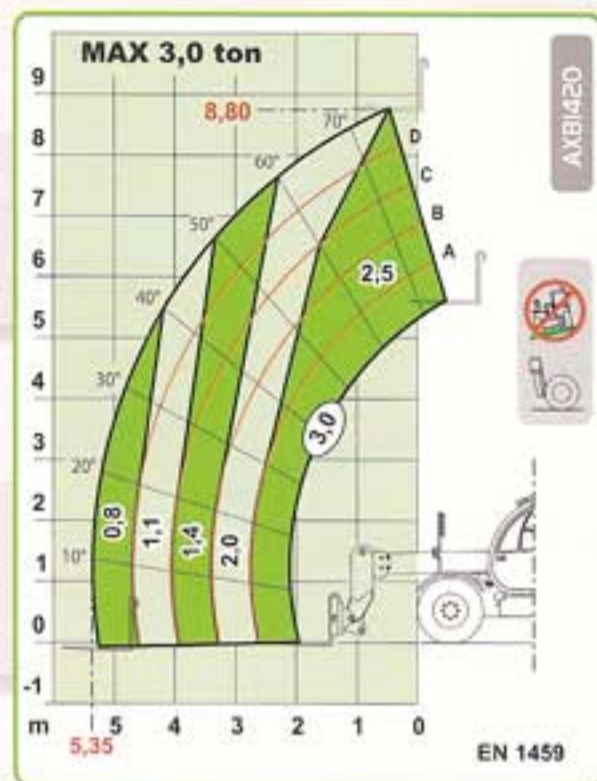
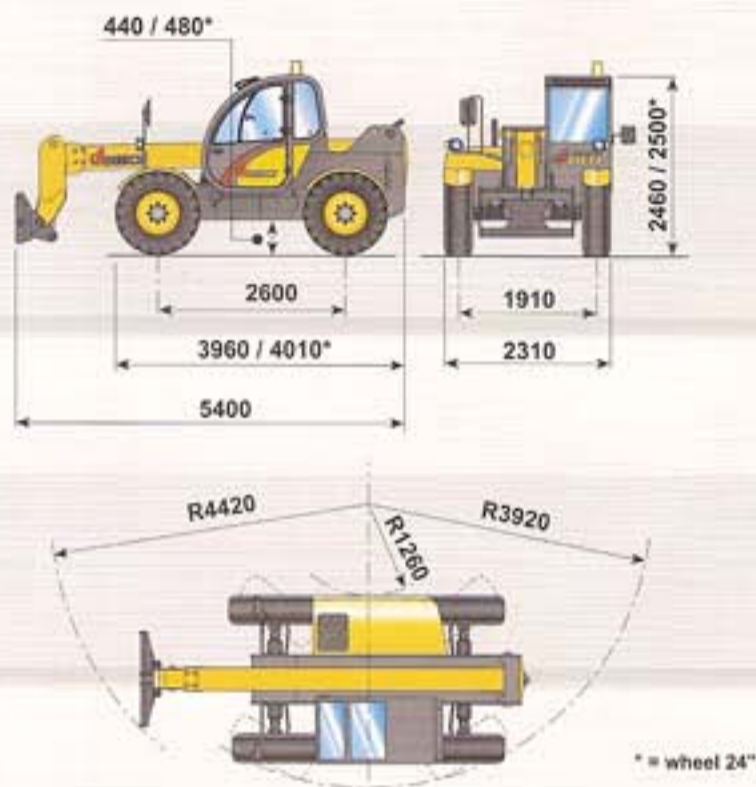


macchine edili ed agricole  
**d DIECI**

**Agri Power 30.9**



# Agri Power 30.9



## PERFORMANCES

|  |           |
|--|-----------|
| Maximum capacity:                            | 3.000 kg  |
| Capacity at maximum height on tyres:         | 2.500 kg  |
| Capacity at maximum boom extension on tyres: | 800 kg    |
| Maximum lifting height:                      | 8,80 m    |
| Maximum horizontal boom extension:           | 5,35 m    |
| Boom extension at maximum height:            | 0,50 m    |
| Fork tilting angle:                          | 134°      |
| Tearing force:                               | 5.700 daN |
| Towing force:                                | 7.300 daN |
| Maximum allowable slope:                     | 40 %      |
| Total empty weight:                          | 8.300 kg  |
| Max speed:                                   | 30 km/h   |
| (on request 40 km/h with TC and TA engine)   |           |

## ENGINE

**IVECO NEF F4GE0454A - TC - 74 kW ENGINE**  
 Maximum power: 74 kW (102 cv) at 2300 rpm  
 Operating principle: four-stroke, diesel engine  
 Cylinder number and layout: 4, vertical in line  
 Displacement: 4485 cm<sup>3</sup> - Turbo compressor  
 Cooling system: liquid

**IVECO NEF F4GE0484C - TA - 94 kW ENGINE**  
 Maximum power: 94 kW (128 cv) at 2300 rpm  
 Operating principle: four-stroke, diesel engine  
 Cylinder number and layout: 4, vertical in line  
 Displacement: 4485 cm<sup>3</sup> - Aftercooler turbo compressor  
 Cooling system: liquid

## TRANSMISSION

Transmission: hydrostatic with variable delivery pump  
 Hydraulic engine: with automatic adjustment  
 Reversing gear: electro - hydraulic  
 Inching pedal for controlled forward movement.  
 Servocontrolled 2 speed gearbox.

## REFUELLING (litre)

|                 |     |
|-----------------|-----|
| Hydraulic tank: | 155 |
| Fuel tank:      | 105 |

## HYDRAULIC SYSTEM

Gear pump with capacity at max speed: 100 l/min  
 Max working pressure: 230 bar  
 Control valve with joystick: 3 in 1

## STANDARD DEVICES

Anti-tipping device with block for hazardous movements.  
 Hydraulic socket for possible accessories on boom head.  
 Closed soundproof ROPS - FOPS approved driver's cab, with heating.  
 Self-locking differential on front axle (limited slip 45%).

## DIFFERENTIAL AXLES

Steering axles: 2, with planetary reduction gears  
 Type of steering: 4 wheels / transversal / 2 wheels  
 Front axle: rigid (levelling on request)  
 Rear axle: oscillating  
 Service brake: oil bath on the 4 wheels with double hydraulic system

## TYRES

|              |           |
|--------------|-----------|
| Tyres:       | 16/70x20" |
| Alternative: | 16/70x24" |

## OPTIONAL AND ACCESSORIES

Optional and Accessories: see the relevant catalogue

The information contained in this publication is merely indicative; the models described may be modified, without notice, by the manufacturer; drawings and photographs may refer to optional or particular equipment for other countries. For any further information, please contact DIECI premises at the address given below.