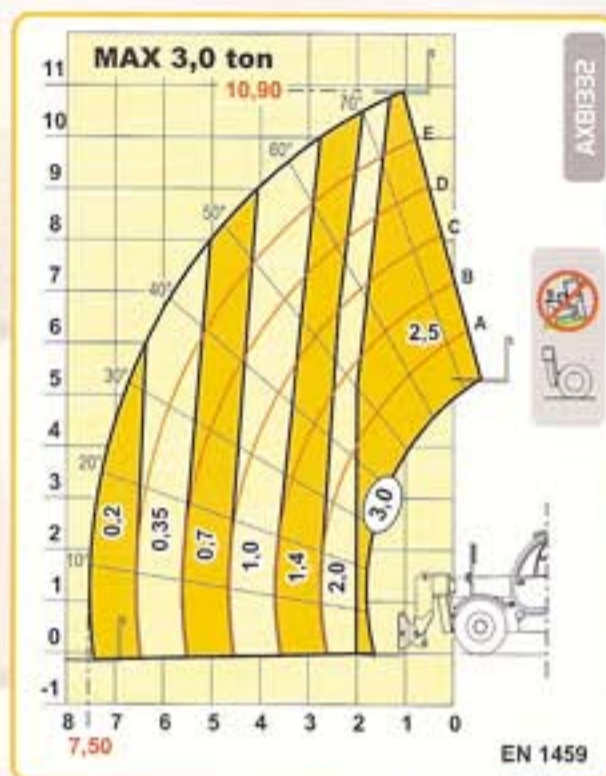
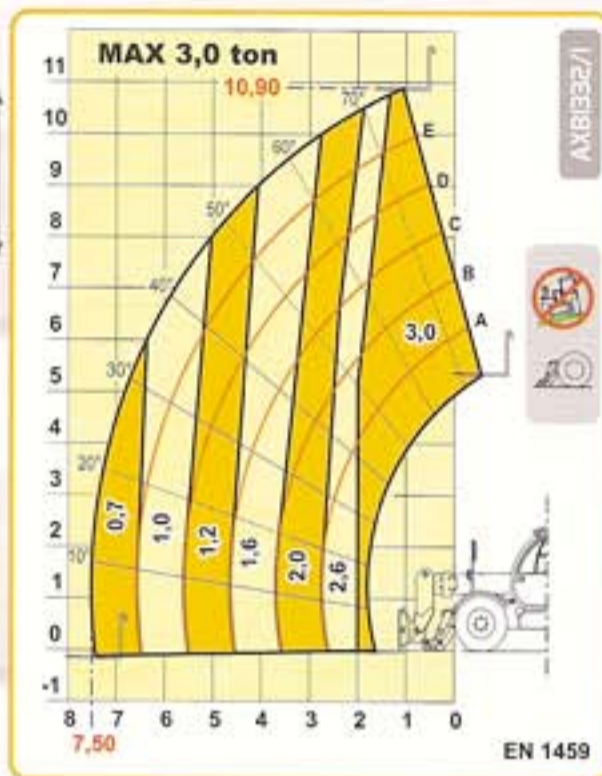
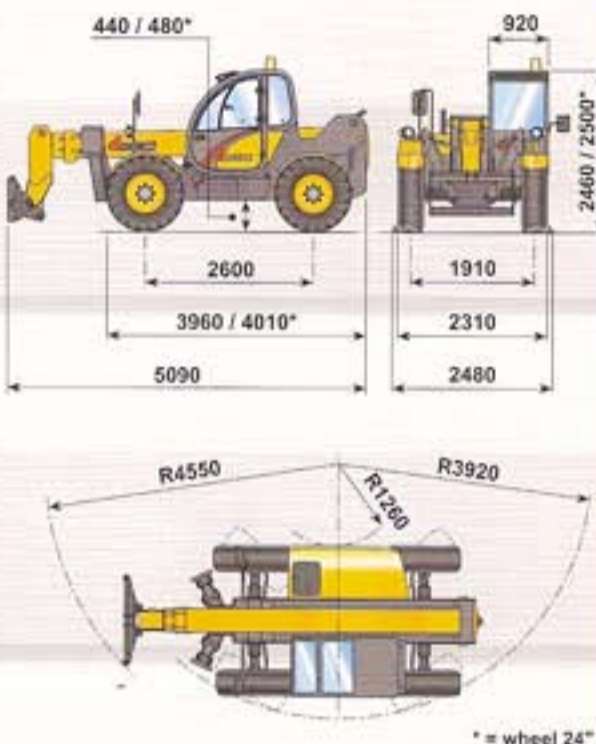


macchine edili ed agricole
d DIECI

Runner 30.11



Runner 30.11



PERFORMANCES

Maximum capacity:	3.000 kg
Capacity at maximum height on stabilizers:	3.000 kg
Capacity at maximum height on tyres:	2.500 kg
Capacity at maximum boom extension on stabilizers:	700 kg
Capacity at maximum boom extension on tyres:	200 kg
Maximum lifting height:	10,90 m
Maximum horizontal boom extension:	7,50 m
Boom extension at maximum height:	1,05 m
Fork tilting angle:	134°
Tearing force:	5.700 daN
Towing force:	7.300 daN
Maximum allowable slope:	40 %
Total empty weight:	9.500 kg
Max speed:	30 km/h

(on request 40 km/h with TC and TA engine)



TRANSMISSION

Transmission:	hydrostatic with variable delivery pump
Hydraulic engine:	with automatic adjustment
Reversing gear:	electro - hydraulic
Inching pedal for controlled forward movement:	
Servocontrolled 2 speed gearbox:	



HYDRAULIC SYSTEM

Gear pump with capacity at max speed:	100 lt/1'
Max working pressure:	230 bar
Control valve with joystick:	3 in 1



DIFFERENTIAL AXLES

Steering axles:	2, with planetary reduction gears
Type of steering:	4 wheels / transversal / 2 wheels
Front axle:	rigid (levelling on request)
Rear axle:	oscillating
Service brake:	oil bath on the 4 wheels with double hydraulic system



ENGINE

IVECO NEF F4GE0404A - NA - 60 kW ENGINE	
Maximum power:	60 kW (82 HP) at 2300 rpm
Operating principle:	four-stroke, diesel engine
Cylinder number and layout:	4, vertical in line
Displacement:	4485 cm ³ - aspirated
Cooling system:	liquid

IVECO NEF F4GE0454A - TC - 74 kW ENGINE	
Maximum power:	74 kW (102 hp) at 2300 rpm
Operating principle:	four-stroke, diesel engine
Cylinder number and layout:	4, vertical in line
Displacement:	4485 cm ³ - Turbo compressor
Cooling system:	liquid

IVECO NEF F4GE0484C - TA - 94 kW ENGINE	
Maximum power:	94 kW (128 hp) at 2300 rpm
Operating principle:	four-stroke, diesel engine
Cylinder number and layout:	4, vertical in line
Displacement:	4485 cm ³ - Aftercooler turbo compressor
Cooling system:	liquid



REFUELLING (litre)

Hydraulic tank:	168
Fuel tank:	105



STANDARD DEVICES

Anti-tipping device with block for hazardous movements.
Hydraulic socket for possible accessories on boom head.
Closed soundproof ROPS - FOPS approved driver's cab, with heating.
Self-locking differential on front axle (limited slip 45%).
Stabilizers with independent hydraulic tilting.



TYRES

Tyres:	16/70x20" MPT04
Alternative:	405/70x24" MPT04



OPTIONAL AND ACCESSORIES

Optional and Accessories: see the relevant catalogue

The information contained in this publication is merely indicative; the models described may be modified, without notice, by the manufacturer; drawings and photographs may refer to optional or particular equipment for other countries. For any further information, please contact DIECI premises at the address given below.