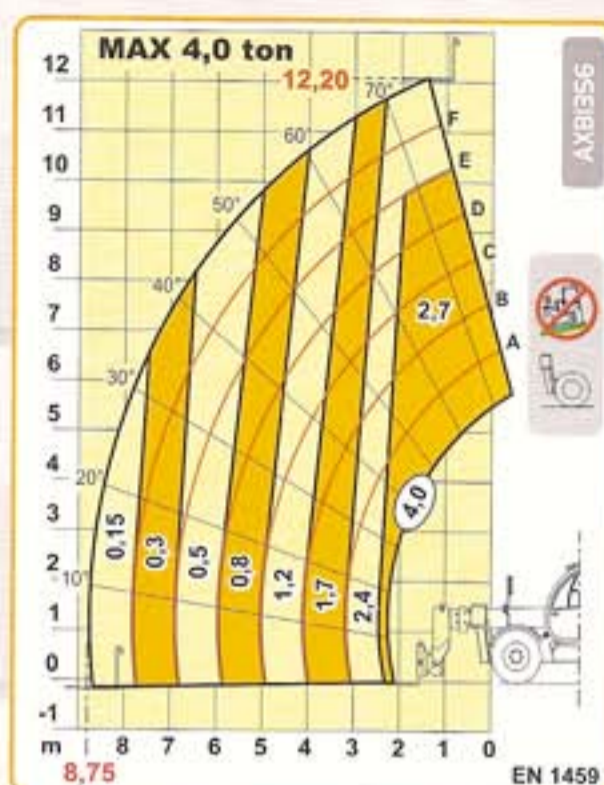
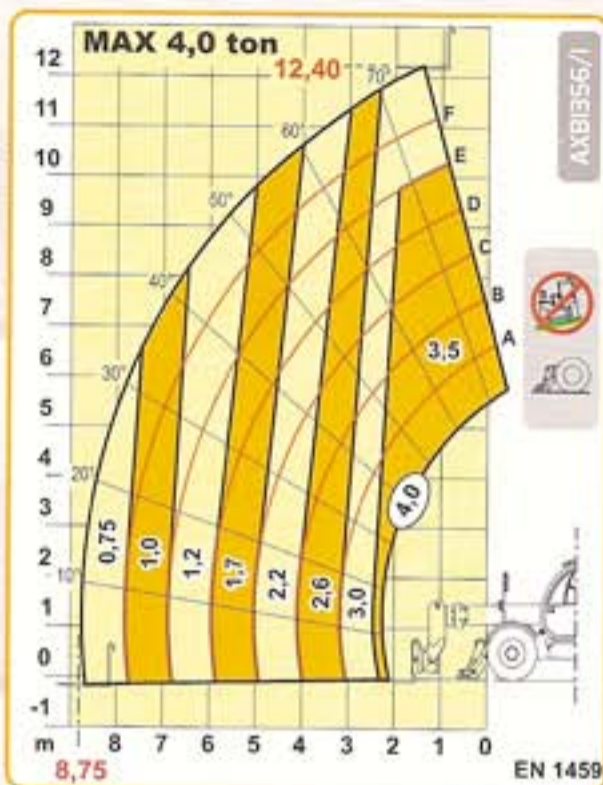
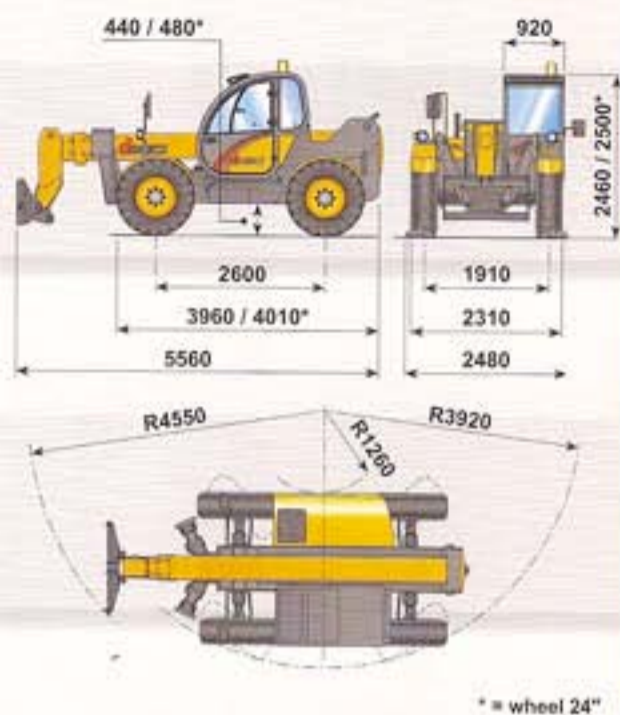


macchine edili ed agricole
d DIECI

Runner 40.13



Runner 40.13



PERFORMANCES

Maximum capacity:	4.000 kg
Capacity at maximum height on stabilizers:	3.000 kg
Capacity at maximum height on tyres:	2.400 kg
Capacity at maximum boom extension on stabilizers:	750 kg
Capacity at maximum boom extension on tyres:	150 kg
Maximum lifting height:	12,40 m
Maximum horizontal boom extension:	8,75 m
Boom extension at maximum height:	1,40 m
Fork tilting angle:	134°
Tearing force:	5.700 daN
Towing force:	7.300 daN
Maximum allowable slope:	40 %
Total empty weight:	10.100 kg
Max speed:	30 km/h

(on request 40 km/h with TC and TA engine)



TRANSMISSION

Transmission: hydrostatic with variable delivery pump
 Hydraulic engine: with automatic adjustment
 Reversing gear: electro - hydraulic
 Inching pedal for controlled forward movement.
 Servocontrolled 2 speed gearbox.



HYDRAULIC SYSTEM

Gear pump with capacity at max speed: 100 l/1'
 Max working pressure: 230 bar
 Control valve with joystick: 3 in 1



DIFFERENTIAL AXLES

Steering axles: 2, with planetary reduction gears
 Type of steering: 4 wheels / transversal / 2 wheels
 Front axle: rigid (levelling on request)
 Rear axle: oscillating
 Service brake: oil bath on the 4 wheels with double hydraulic system



ENGINE

IVECO NEF F4GE0404A - NA - 60 kW ENGINE
 Maximum power: 60 kW (82 hp) at 2300 rpm
 Operating principle: four-stroke, diesel engine
 Cylinder number and layout: 4, vertical in line
 Displacement: 4485 cm³ - aspirated
 Cooling system: liquid

IVECO NEF F4GE0454A - TC - 74 kW ENGINE
 Maximum power: 74 kW (102 hp) at 2300 rpm
 Operating principle: four-stroke, diesel engine
 Cylinder number and layout: 4, vertical in line
 Displacement: 4485 cm³ - Turbo compressor
 Cooling system: liquid

IVECO NEF F4GE0484C - TA - 94 kW ENGINE
 Maximum power: 94 kW (128 hp) at 2300 rpm
 Operating principle: four-stroke, diesel engine
 Cylinder number and layout: 4, vertical in line
 Displacement: 4485 cm³ - Aftercooler turbo compressor
 Cooling system: liquid



REFUELLING (litre)

Hydraulic tank: 168
 Fuel tank: 105



STANDARD DEVICES

Anti-tipping device with block for hazardous movements.
 Hydraulic socket for possible accessories on boom head.
 Closed soundproof ROPS - FOPS approved driver's cab, with heating.
 Self-locking differential on front axle (limited slip 45%).
 Stabilizers with independent hydraulic tilting.



TYRES

Tyres: 16/70x20" MPT04
 Alternative: 405/70x24" MPT04



OPTIONAL AND ACCESSORIES

Optional and Accessories: see the relevant catalogue

The information contained in this publication is merely indicative; the models described may be modified, without notice, by the manufacturer; drawings and photographs may refer to optional or particular equipment for other countries. For any further information, please contact DIECI premises at the address given below.